

ThermTec



VIDAR 2.0 Series

Thermal Imaging Scope



NETD \leq 18mK



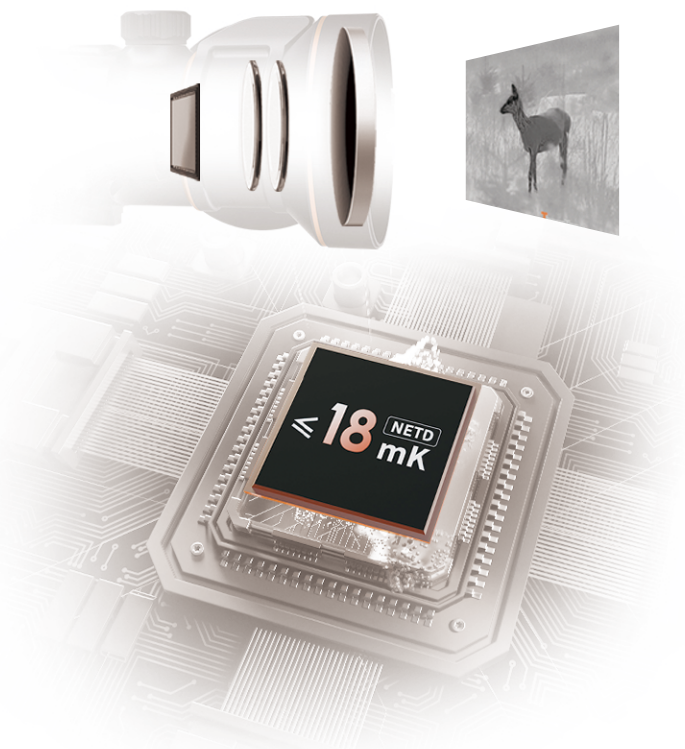
18H Durability



3s Startup

18mK Sharp Clarity

With the **NETD $\leq 18\text{mK}$** sensor, enjoy exceptional image quality that captures even the smallest temperature differences, delivering precise target details even in harsh conditions or complete darkness.



AI Calibration Enhanced Image Stability

Advanced **AI** technology and self-learning ensure ultra-clear image quality, unaffected by environmental changes. Each use enriches data, enabling consistent image stability in similar conditions.



18H Durability

Immerse yourself in extended battery life with two replaceable batteries, offering up to **18 hours** of continuous operation to capture every moment of your journey.



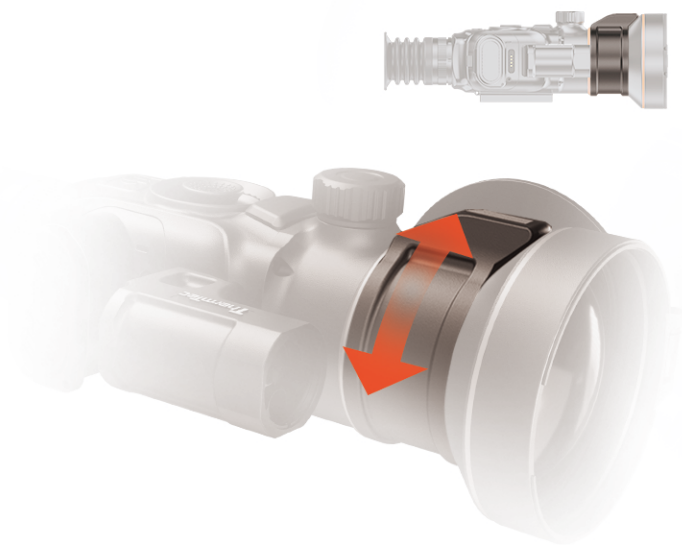
Swift 3s Startup

Vidar 2.0 powers up in **3 seconds**, ensuring swift and precise targeting. Benefit from its energy-efficient design, which extends battery life through features such as setting an auto-shutdown time.



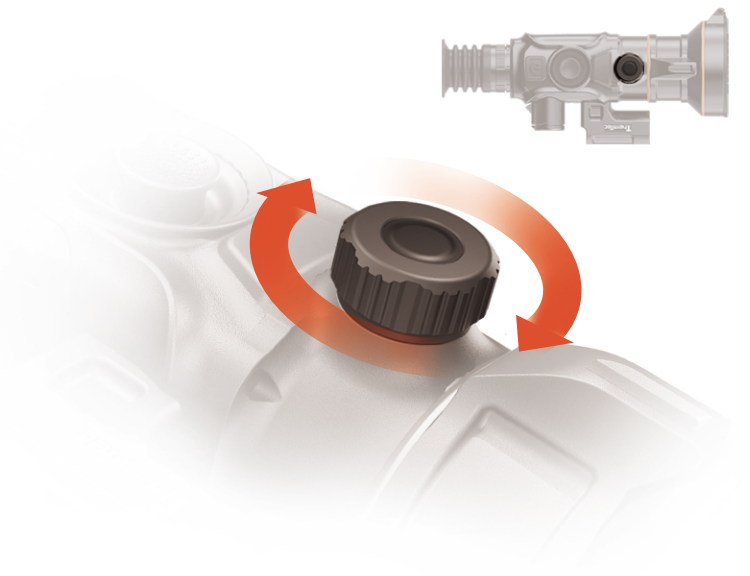
Effortless FOV Control

Enjoy the benefits of the upgraded smooth field-of-view switch lever. The newly elevated design facilitates convenient **one-handed operation**, maintaining device stability throughout use.



Enhanced Focus Convenience

Top rotary focus control replaces the circular focus ring behind the lens. Redesign enhances usability by enabling flexible focus adjustment while ensuring stability during targeting.



Master Long-range Shooting

Once the target is locked, the latest **ThermTec Outdoor** app allows settings adjustments and provides point-of-aim recommendations to counter bullet drop for long-range accuracy.



Soundless Lens Cover

Achieve **silent precision** with the new lens cover, designed with adjustable positioning for optimal alignment. This user-centric design minimizes rebound, noise, breakage, and view obstruction.



Specifications



Model	Vidar335 2.0	Vidar360 2.0	Vidar650 2.0	Vidar660 2.0
Microbolometer				
Type	Uncooled			
Resolution	384x288		640x512	
Pixel pitch	12μm			
NETD	≤18mK	≤20mK	≤18mK	≤20mK
Spectral range	8-14μm			
Frame rate	50HZ			
Detection Range	1800m	1000/3000m	2600m	1000/3000m
Optics				
Objective lens	35mm, F1.0	20/60mm, F1.0	50mm, F1.0	20/60mm, F1.0
Field of view	7.5°x5.6°	13.1°x9.8°/ 4.4°x3.3°	8.8°x7.0°	21.7°x17.4°/ 7.3°x5.9°
m@100m	13.2x9.9	23x17.3/ 7.7x5.8	15.4x12.3	38.4x30.7/ 12.8x10.2
Magnification	3.2X	1.8X/5.5X	2.8X	1.1X/3.2X
Digital zoom	1.0-4.0X smooth & rapid zoom			
Eye relief	45mm			
Exit pupil	6mm			
Diopter	±5D			
Aiming Reticle				
Reticle	7			
Reticle color	5, Black, white, red, green, blue			
Display				
Type	AMOLED			
Resolution	1024x768			
Display size	0.39 inch			
Color palette	6			
Function				
Max. recoil power on rifled weapon	6000J			
RAV	Yes			
Auto zeroing	Yes			
Manual zeroing	Yes			
Picture-in-picture	Yes			
AI ranging	Yes			
Image calibration	Manual/Auto			
Video Recorder				
Phone/video playback	Yes			
Inbuilt memory	64GB			
Interface				
Magnetic interface	Data transfer			
Hotspot	Yes			
Battery				
Battery type	Replaceable, 2*18650			
Battery life	18h	18h	16h	16h
Environment				
Operating temperature	-20- +50°C			
IP rating	IP67			
Weight, g	566	825	625	825
Size, mm	188*92.2*72	233.2*100.4*74.9	200.9*95.7*72	233.2*100.4*74.9
Accessories				
External cable	Magnetic interface data cable			
Other accessory	Standard Picatinny rail, eyeshade, charger and etc.			

Specifications



Model	Vidar335L 2.0	Vidar360L 2.0	Vidar650L 2.0	Vidar660L 2.0
Microbolometer				
Type	Uncooled			
Resolution	384x288		640x512	
Pixel pitch	12μm			
NETD	≤18mK	≤20mK	≤18mK	≤20mK
Spectral range	8-14μm			
Frame rate	50HZ			
Detection Range	1800m	1000/3000m	2600m	1000/3000m
Optics				
Objective lens	35mm, F1.0	20/60mm, F1.0	50mm, F1.0	20/60mm, F1.0
Field of view	7.5°x5.6°	13.1°x9.8°/ 4.4°x3.3°	8.8°x7.0°	21.7°x17.4°/ 7.3°x5.9°
m@100m	13.2x9.9	23x17.3/ 7.7x5.8	15.4x12.3	38.4x30.7/ 12.8x10.2
Magnification	3.2X	1.8X/5.5X	2.8X	1.1X/3.2X
Digital zoom	1.0-4.0X smooth & rapid zoom			
Eye relief	45mm			
Exit pupil	6mm			
Dioptr	±5D			
Aiming Reticle				
Reticle	7			
Reticle color	5, Black, white, red, green, blue			
Display				
Type	AMOLED			
Resolution	1024x768			
Display size	0.39 inch			
Color palette	6			
Function				
Max. recoil power on rifled weapon	6000J			
RAV	Yes			
Auto zeroing	Yes			
Manual zeroing	Yes			
Picture-in-picture	Yes			
Laser ranging	1200m			
Ballistic Calculator	Yes			
Image calibration	Manual/Auto			
Video Recorder				
Phone/video playback	Yes			
Inbuilt memory	64GB			
Interface				
Magnetic interface	Data transfer			
Hotspot	Yes			
Battery				
Battery type	Replaceable, 2*18650			
Battery life	18h	18h	16h	16h
Environment				
Operating temperature	-20- +50℃			
IP rating	IP67			
Weight, g	628	887	687	887
Size, mm	188*103.5*72	233.2*111.7*74.9	200.9*107*72	233.2*111.7*74.9
Accessories				
External cable	Magnetic interface data cable			
Other accessory	Standard Picatinny rail, eyeshade,charger and etc.			



ThermTec

ThermTec Technology Co., Ltd.

Email: info@thermeyeretec.com

Website: <https://www.thermeyeretec.com>

Follow us at
“ThermTec Outdoor”

