



Cyclops-D Series

Thermal Imaging Monocular

Dual-FOV | NETD \leq 25mK | 12H

Taking You to Explore the Nature



Dual-Field of View



Long Battery Life



Highly Sensitive Detector



High-Precision Zoom



Joystick Control



Target Outline Mode



AI Rangefinder



Real-time APP Notification



Long Detection Range



■ Dual-Field of View

A wide FOV with a focal length of 20/25/35mm can be used for detection;

A narrow FOV with a focal length of 40/50/70mm can be used for identification.

FOV@100m



CP640D

20mm ⇌ 40mm



38.4m



19.2m

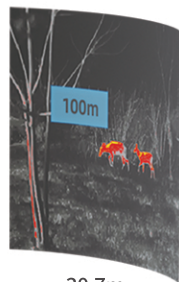
30.7m

15.4m



CP650D

25mm ⇌ 50mm



30.7m



15.4m

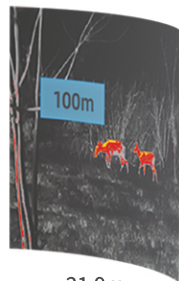
24.6m

12.3m



CP670D

35mm ⇌ 70mm



21.9m

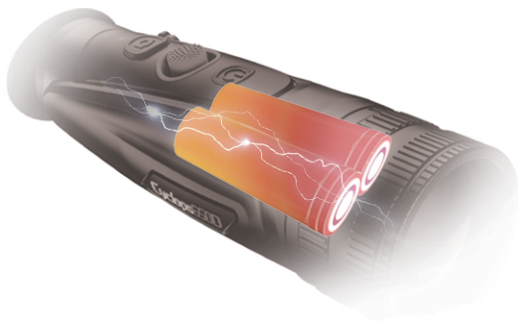


11.0m

17.6m

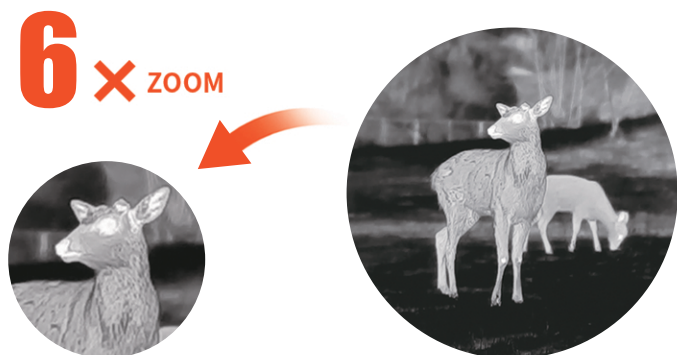
8.8m

■ 12 Hours of Work on a Single Charge



■ High-Precision Zoom

1.0-6.0X HD zooming ensures excellent sharpness and the highest resolution of details from minimum to maximum magnification.



■ Joystick Control

The well-designed joystick performs an easy operation on menu operations by toggling the button in any direction.



■ Highly Sensitive Sensor

NETD $\leq 25\text{mk}$
12 μm detector

■ Target Outline Mode

The Outline Mode is developed to offer a new choice of visual experience, enabling you to have a clear clue of your target, while reducing the strong light contrast to your eyes in darkness.



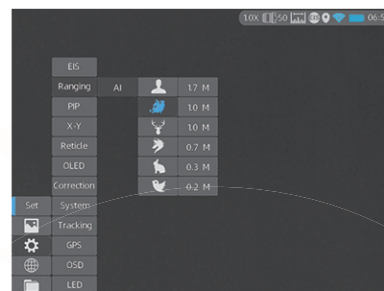
Palette



Outline

■ Intelligent AI Ranging

Based on deep learning algorithm, the monocular is able to automatically measure the object distance. With the new feature of setting target type and size, the accuracy of AI ranging has been greatly improved.



972m



Real-time APP Notification

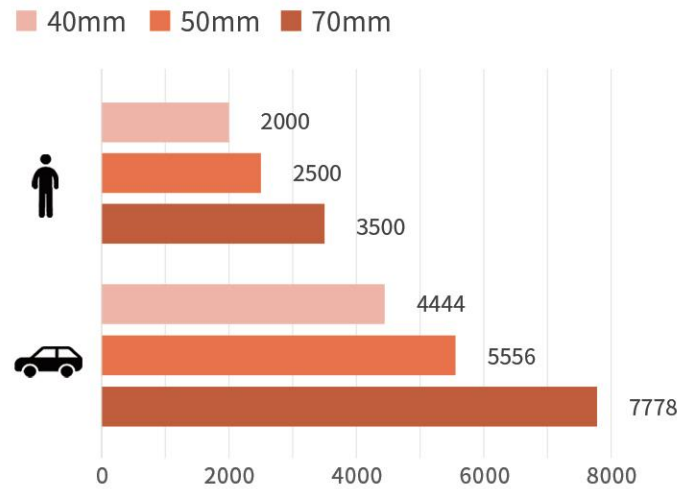
The “Smart Thermal” APP can instantly pop up a notification while the monocular detecting and identifying the target to avoid any distraction.



Download and install the “Smart Thermal” APP

Long Detection Range

Maximum 70mm objective lens and advanced algorithm, it boasts exceptional detection range of up to 7,778 meters in complete darkness.



Specifications

Model	CP340D	CP350D	CP640D	CP650D	CP670D
Microbolometer					
Resolution	384x288		640x512		
Pixel pitch	12μm				
NETD	25mk@300k				
Frame rate	50HZ				
Optics					
Objective lens	20/40 F1.0 Dual FOV	25/50 F1.0 Dual FOV	20/40 F1.0 Dual FOV	25/50 F1.0 Dual FOV	35mm/F0.9 70mm/F1.0 Dual FOV
Field of view	13.1°x9.9° 6.6°x4.9°	10.5°x7.9° 5.3°x4.0°	21.7°x17.5° 11.0°x8.8°	17.5°x14.0° 8.8°x7.0°	12.5°x10.0° 6.3°x5.0°
Magnification	1.9X-3.8X	2.4X-4.8X	1.1X-2.2X	1.4X-2.8X	2.0X-4.0X
Digital zoom	1-6X continuous zoom				
Eye relief	40mm				
Exit pupil	6mm				
Diopter	±5D				
Display					
Type	1024x768 AMOLED				
Display size	0.39 inch				
Color palette	6				
Image model	WDR (Wide Dynamic Range) Mode; Object Mode(Object enhanced); Target Outline Mode				
Function					
Photo/video playback	Yes				
Built-in memory	32GB				
PIP	Yes				
AI/MIL distance measurement	Yes				
GPS	Yes				
Real-time notification	Yes				
Battery					
Internal battery	Internal high capacity lithium ion (18650x2)				
Battery life	Continuous working time ≥12h				
Interface					
Type-C	Supports battery charging, data transfer and analog video output				
WI-FI	Two-way Wi-Fi connection; App remote control				
Environment					
Working temperature	-20°C—+50°C				
Protection level	IP67				
Weight, g	550	600	550	600	780±10
Size, mm	200x66x62	200x66x62	200x66x62	200x66x62	228x83x83



ThermTec Technology Co., Ltd.

Email: info@thermeyerotec.com

Website: <https://www.thermeyerotec.com>

Follow us at
“ThermTec Outdoor”

