

ThermTec



# ARES 2.0 Series

## Thermal Imaging Scope



NETD  $\leq$  18mK



18H Durability



3s Startup



# Taking You to Explore the Nature



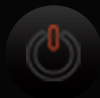
NETD  $\leq 18\text{mK}$



AI Calibration Enhanced Image Stability



Tripled Battery Life Extension



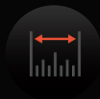
Rapid 3s Startup



Weight Barrier Shattered



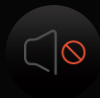
Conquer the Farthest Targets



Compact Laser Rangefinder



Seamless FOV Control

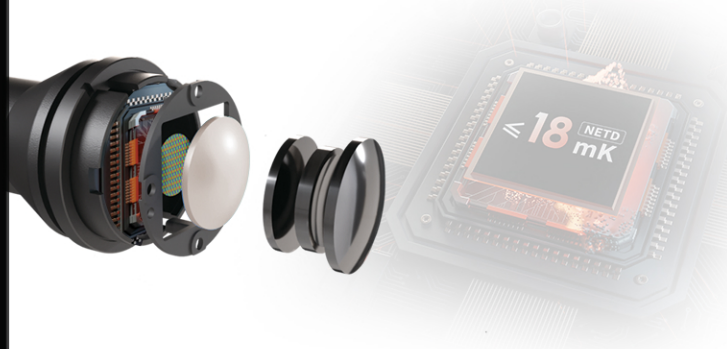


Silent Lens Cover



## Ultra Image Quality

With advanced **NETD  $\leq 18\text{mK}$**  sensor, it excels at detecting hidden targets and precisely capturing even the slightest temperature variations. Observe every intricate detail, from the contours of animals to crucial joints, unraveling a world of unseen insights.



## AI Calibration Enhanced Image Stability

Ares 2.0's advanced **AI technology** and **self-learning capabilities** ensure that image quality remains stable regardless of environmental changes. With each use, it gathers environmental data and applies sophisticated algorithms to maintain image stability for your next task. The more you use it, the better it gets!



## Conquer the Farthest Targets

Once your target is locked, maximizing accuracy is essential. With our latest app, **ThermTec Outdoor**, to adjust your settings and benefit from point of aim recommendations for overcoming bullet drop and enhancing your long-range shooting accuracy.





## Rapid 3s Startup

When your target comes into view, simply power up the Ares 2.0 in **3 seconds**, it enables quick and precise aiming. Set your preferred auto-shutdown time and benefit from its energy-efficient design, which extends battery life.



## Compact Laser Rangefinder

Capture the perfect shot by accurately measuring the target distance with our upgraded **1000m** compact laser rangefinder. Now half the size of the previous model, it integrates seamlessly with the body for quick and precise measurements with an accuracy of  $\pm 1$  meter at 100 meters.



## Weight Barrier Shattered

The sleek and tubular design eliminates unnecessary bulk. With a remarkable **10% weight** reduction, it becomes your effortless companion on any journey. Embrace the freedom of mobility without compromising on performance.



## Seamless FOV Control

Experience smooth and effortless view switching with the upgraded field-of-view switch. The newly raised lever adds convenience, enabling **one-handed operation** without compromising the stability of the device.



## Tripled Battery Life Extension

Immerse yourself in the realm of supreme endurance with Ares 2.0! The combination of a built-in battery and a rechargeable battery grants you an astounding **18 hours** of uninterrupted operation, ensuring you never miss a single moment.



## Silent Lens Cover

Silent precision at its finest! The new silent lens cover with adjustable positioning fits perfectly against the body at its maximum angle, eliminating issues with rebound, noise, breakage, and obstructed view.





# Specifications



Model	ARES 335 2.0	ARES 360 2.0	ARES 650 2.0	ARES 660 2.0
Microbolometer				
Type	Uncooled			
Resolution	384x288		640x512	
Pixel pitch	12μm			
NETD	≤18mK	≤20mK	≤18mK	≤20mK
Spectral range	8-14μm			
Frame rate	50HZ			
Detection Range	1800m	1000/3000m	2600m	1000/3000m
Optics				
Objective lens	35mm, F1.0	20/60mm, F1.0	50mm, F1.0	20/60mm, F1.0
Field of view	7.5°x5.6°	13.1°x9.8°/ 4.4°x3.3°	8.8° x 7.0°	21.7°x17.4°/ 7.3°x5.9°
m@100m	13.2x9.9	23x17.3/ 7.7x5.8	15.4x12.3	38.4x30.7/ 12.8x10.2
Magnification	3.2X	1.8X/5.5X	2.8X	1.1X/3.2X
Digital zoom	1.0-4.0X smooth & rapid zoom			
Eye relief	50mm			
Exit pupil	6mm			
Diopter	±5D			
Aiming Reticle				
Reticle	7			
Reticle color	5, Black, white, red, green, blue			
Display				
Type	AMOLED			
Resolution	1024x768			
Color palette	6			
Function				
Max. recoil power on rifled weapon	6000J			
Mounting brackets on weapon	Standard 30mm rings			
RAV	Yes			
AI ranging	Yes			
Image calibration	Manual/Auto			
Video Recorder				
Inbuilt memory	64GB			
Interface				
Type C	Data transfer			
Hotspot	Yes			
Battery				
Battery type	Replaceable, 1*18650 or 18500 battery,1*18650 inbuilt battery			
Battery reverse connection	Yes			
Battery life	18h	18h	16h	16h
Environment				
Operating temperature	-20- +50℃			
IP rating	IP67			
Weight, g	814	1072	873	1072
Size, mm	391.8*80.7* 82.2	435.7*89.5* 92.9	404.8*84.7* 84.9	435.7*89.5* 92.9



# Specifications



Model	ARES 335L 2.0	ARES 360L 2.0	ARES 650L 2.0	ARES 660L 2.0
Microbolometer				
Type	Uncooled			
Resolution	384x288		640x512	
Pixel pitch	12μm			
NETD	≤18mK	≤20mK	≤18mK	≤20mK
Spectral range	8-14μm			
Frame rate	50HZ			
Detection Range	1800m	1000/3000m	2600m	1000/3000m
Optics				
Objective lens	35mm, F1.0	20/60mm, F1.0	50mm, F1.0	20/60mm, F1.0
Field of view	7.5°x5.6°	13.1°x9.8°/ 4.4°x3.3°	8.8° x 7.0°	21.7°x17.4°/ 7.3°x5.9°
m@100m	13.2x9.9	23x17.3/ 7.7x5.8	15.4x12.3	38.4x30.7/ 12.8x10.2
Magnification	3.2X	1.8X/5.5X	2.8X	1.1X/3.2X
Digital zoom	1.0-4.0X smooth & rapid zoom			
Eye relief	50mm			
Exit pupil	6mm			
Diopter	±5D			
Aiming Reticle				
Reticle	7			
Reticle color	5, Black, white, red, green, blue			
Display				
Type	AMOLED			
Resolution	1024x768			
Color palette	6			
Function				
Max. recoil power on rifled weapon	6000J			
Mounting brackets on weapon	Standard 30mm rings			
RAV	Yes			
Laser ranging	1.8mrad@1000m			
Ballistic calculator	Yes			
Image calibration	Manual/Auto			
Video Recorder				
Inbuilt memory	64GB			
Interface				
Type C	Data transfer			
Hotspot	Yes			
Battery				
Battery type	Replaceable, 1*18650 or 18500 battery,1*18650 inbuilt battery			
Battery life	18h	18h	16h	16h
Environment				
Operating temperature	-20- +50°C			
IP rating	IP67			
Weight, g	849	1117	918	1117
Size, mm	391.8*85.3* 82.2	435.7*103.9* 92.9	404.8*92.2* 84.9	435.7*103.9* 92.9





# ThermTec

ThermTec Technology Co., Ltd.

Email: [info@thermeyerotec.com](mailto:info@thermeyerotec.com)

Website: <https://www.thermeyerotec.com>

Follow us at  
“ThermTec Outdoor”

